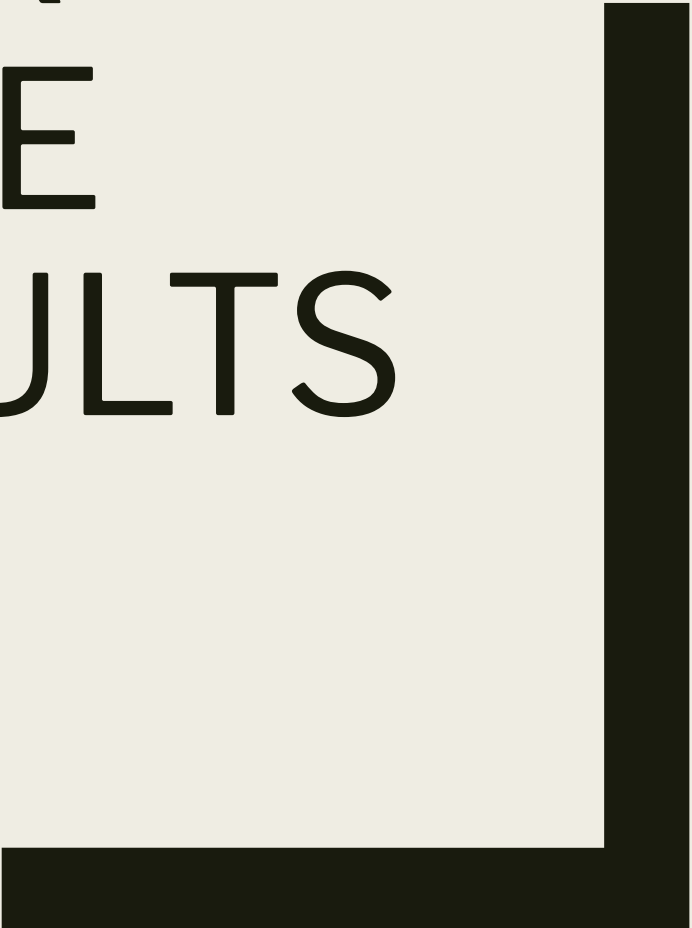


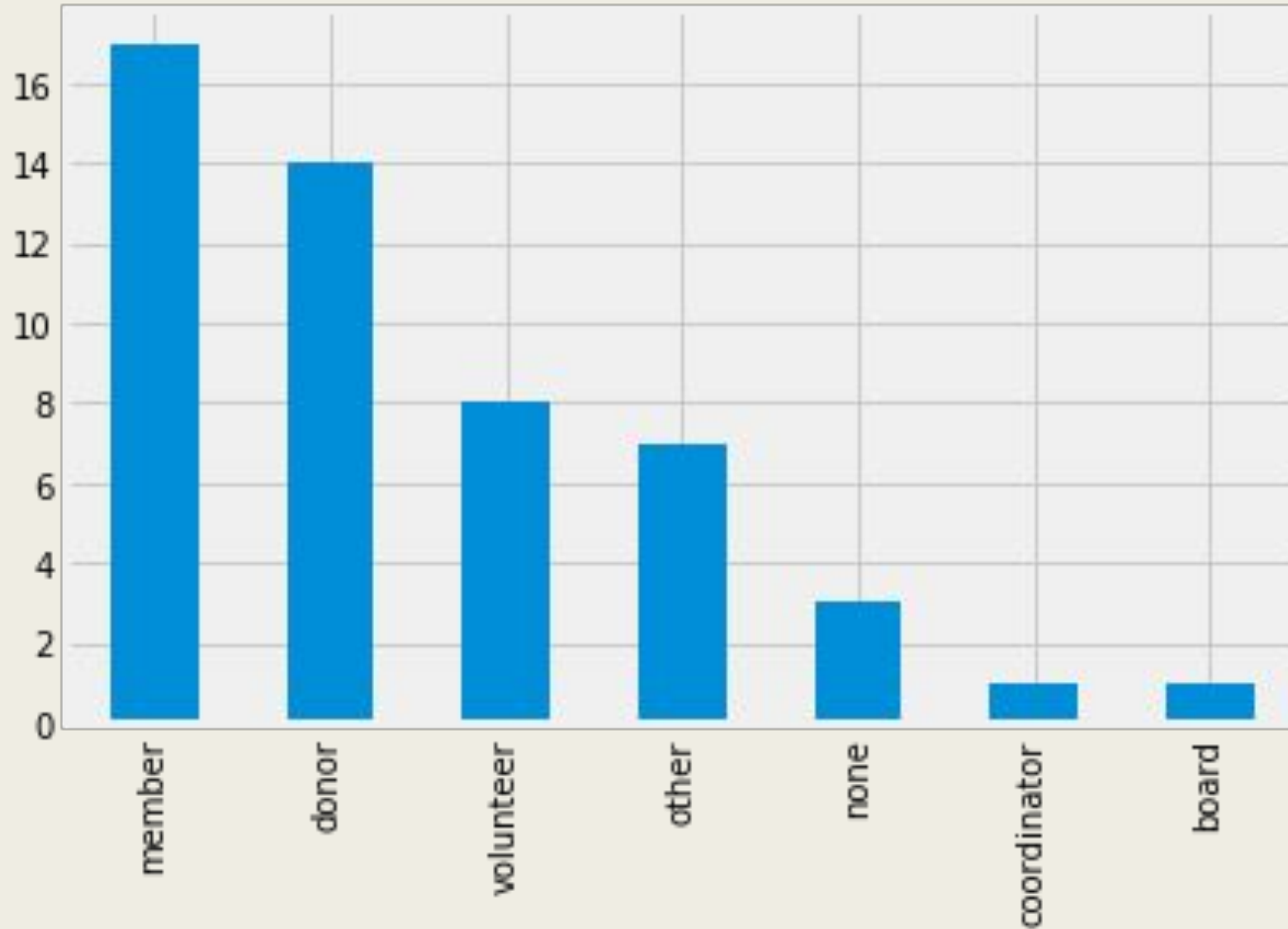


NETWORK DELAWARE SURVEY RESULTS

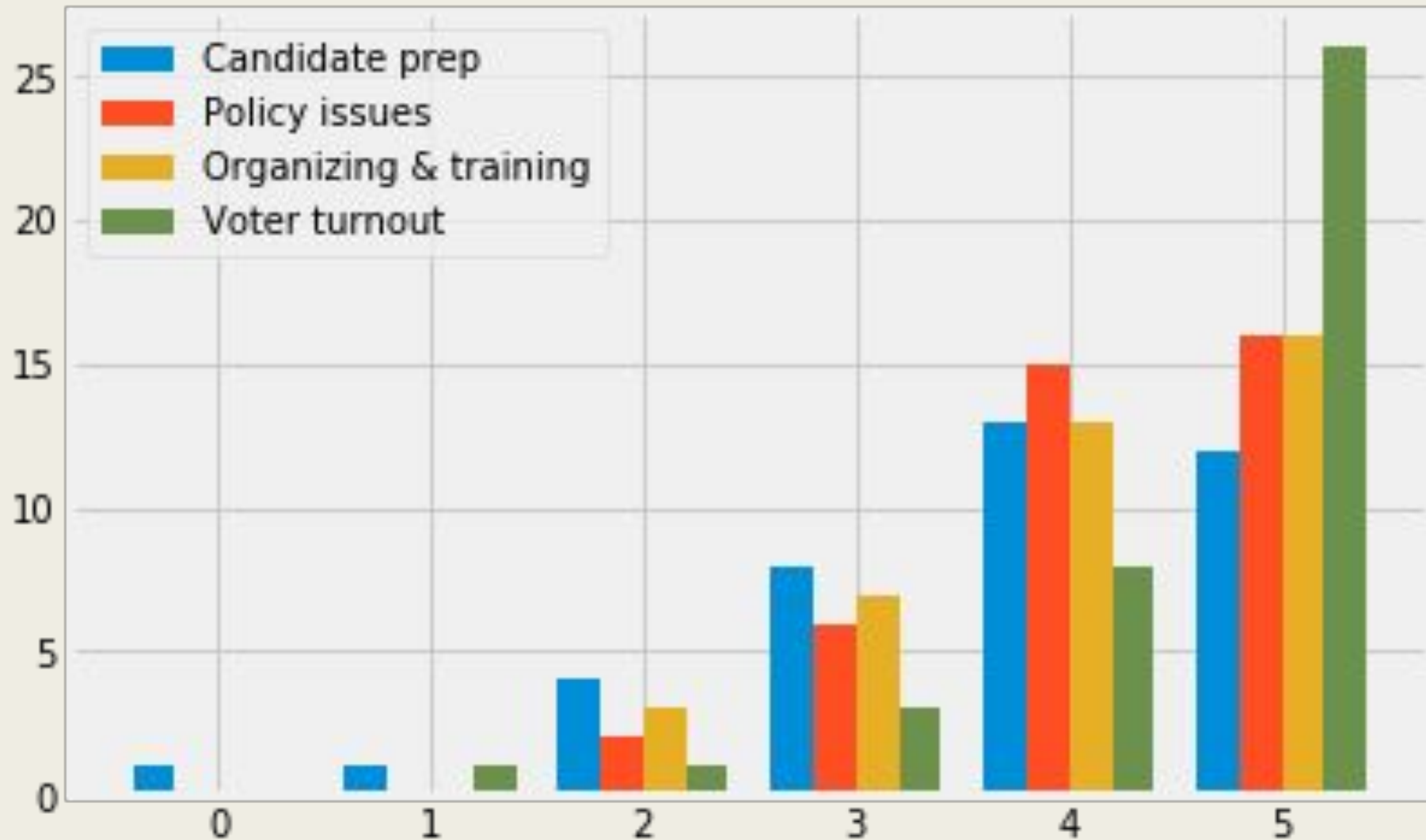
6-8-18



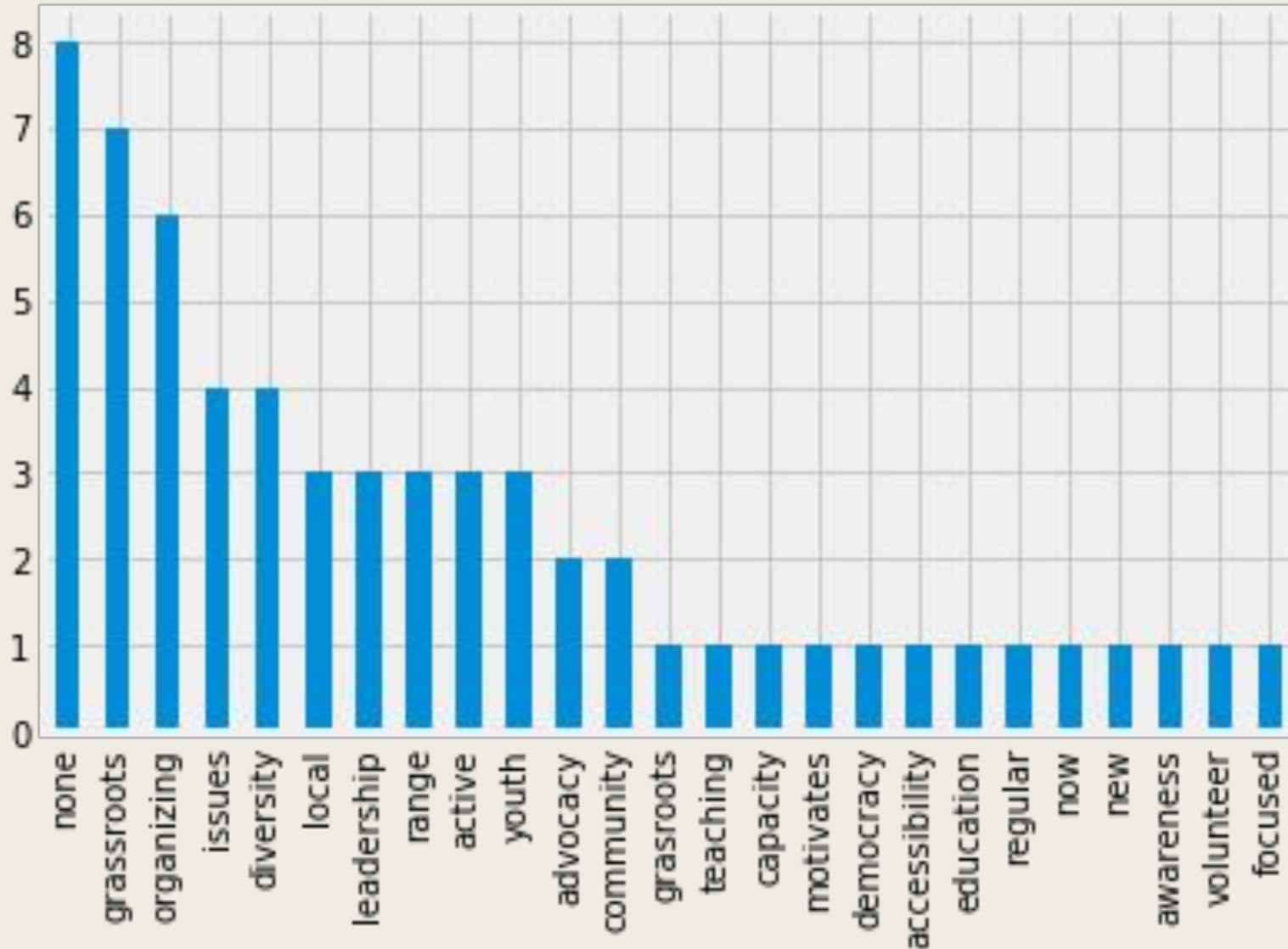
What is your role in Network DE?



On a scale of 1 - 5, which of the following activities gives you the most excitement as an activity in which Network Delaware should engage?



What makes Network Delaware unique and valuable?



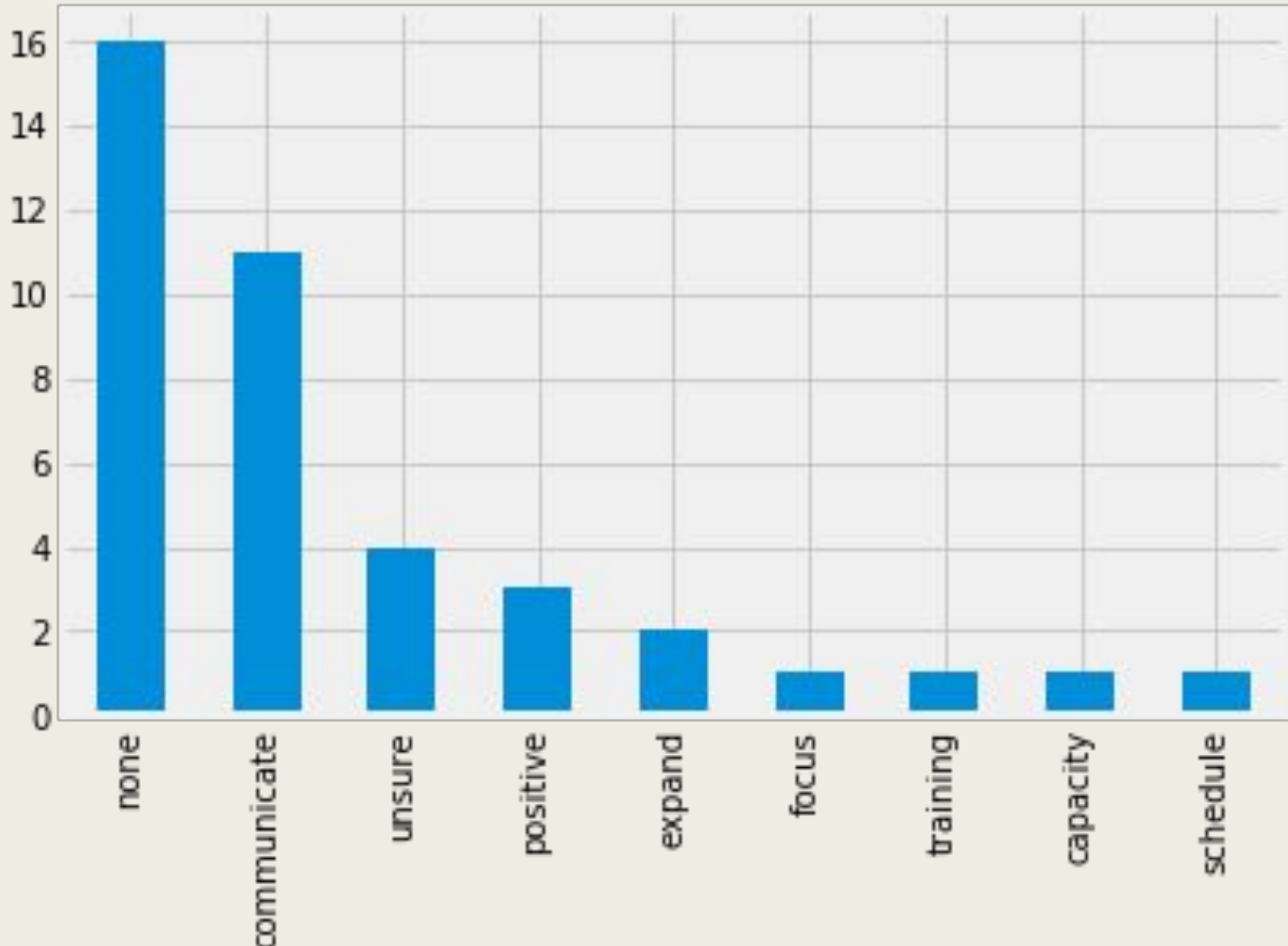
What makes Network Delaware unique and valuable?

- Valuable because it gives a unified voice to people who care about protecting our democracy.
- You harness the power of grassroots leaders while simultaneously building up the next generation of leaders
- It's an actual needed organization for the state and it educators and motivates, not just hold meetings and do a bunch of talking
- The way you're structured by designated actions groups that allows you to work on multiple fronts. Also your leadership in creating a resolution on Sanctuary which was adopted by the Convention of the Episcopal Church in Delaware, the Synod of the 3rd Province of the Episcopal Church and now is finding its way up for consideration by the General Convention, the

What makes Network Delaware unique and valuable?

- The Diversity within the group and goals to go for more diversity and equality.
- It's a unique volunteer- based and directed organization. It's voice is fresh with new approaches/ solutions. Building leadership from the ground up in otherwise disregarded communities is key.
- Holistic approach to driving grassroots change
- It's in Delaware there are so few social change advocacy and organizing CBOs.
- The ability to effectively engage young people.
- Accessibility to all and high quality of programming.

How could Network Delaware better support volunteers and members?



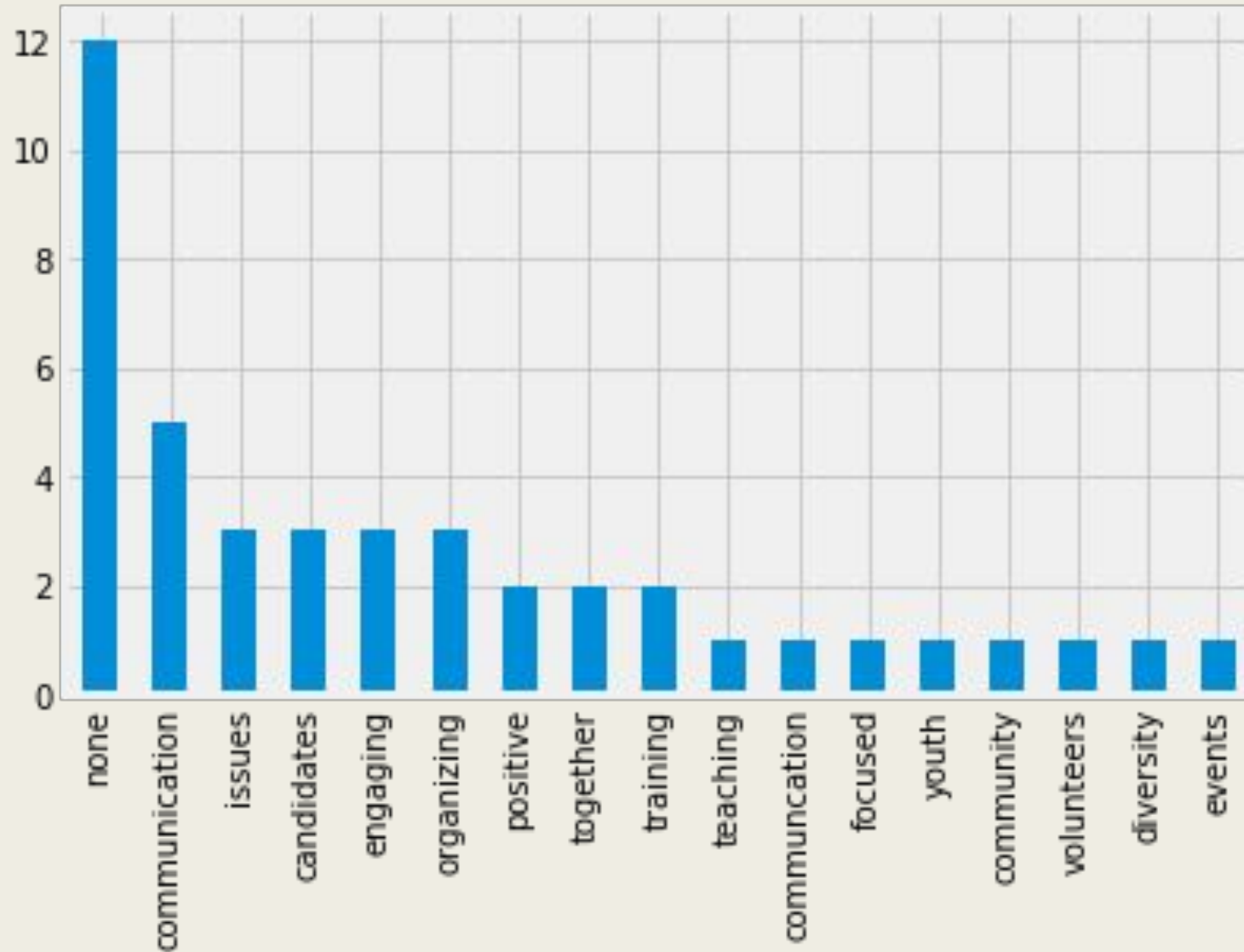
How could Network Delaware better support volunteers and members?

- Standing up for disability gun rights
- more clear messages-sometimes seems like there are too many issues being worked on at one time
- provide capacity building activities through organizations like Delaware Racial Justice Collaborative (umbrella org) to smaller grassroots orgs
- More training and seminars on running effective candidates
- Report back on how events went.
- E newsletter to folks who do not use Facebook

How could Network Delaware better support volunteers and members?

- Expand more in Sussex County
- Communication could be better. Once, I went to an event thinking it was a community forum but it was actually a leadership meeting.
- Ask them frequently
- Advance schedule of events, possibilities to participate from far by either using a webinar tools, or a video conference. It is helpful for people who can't make it to a meeting or event but want to participate or gain knowledge.
- Find more volunteers to spread the work
- Increase communication between volunteers and coordinators.
- Calendar of upcoming events. Local, County and Statewide

What is one thing that Network Delaware is doing well?



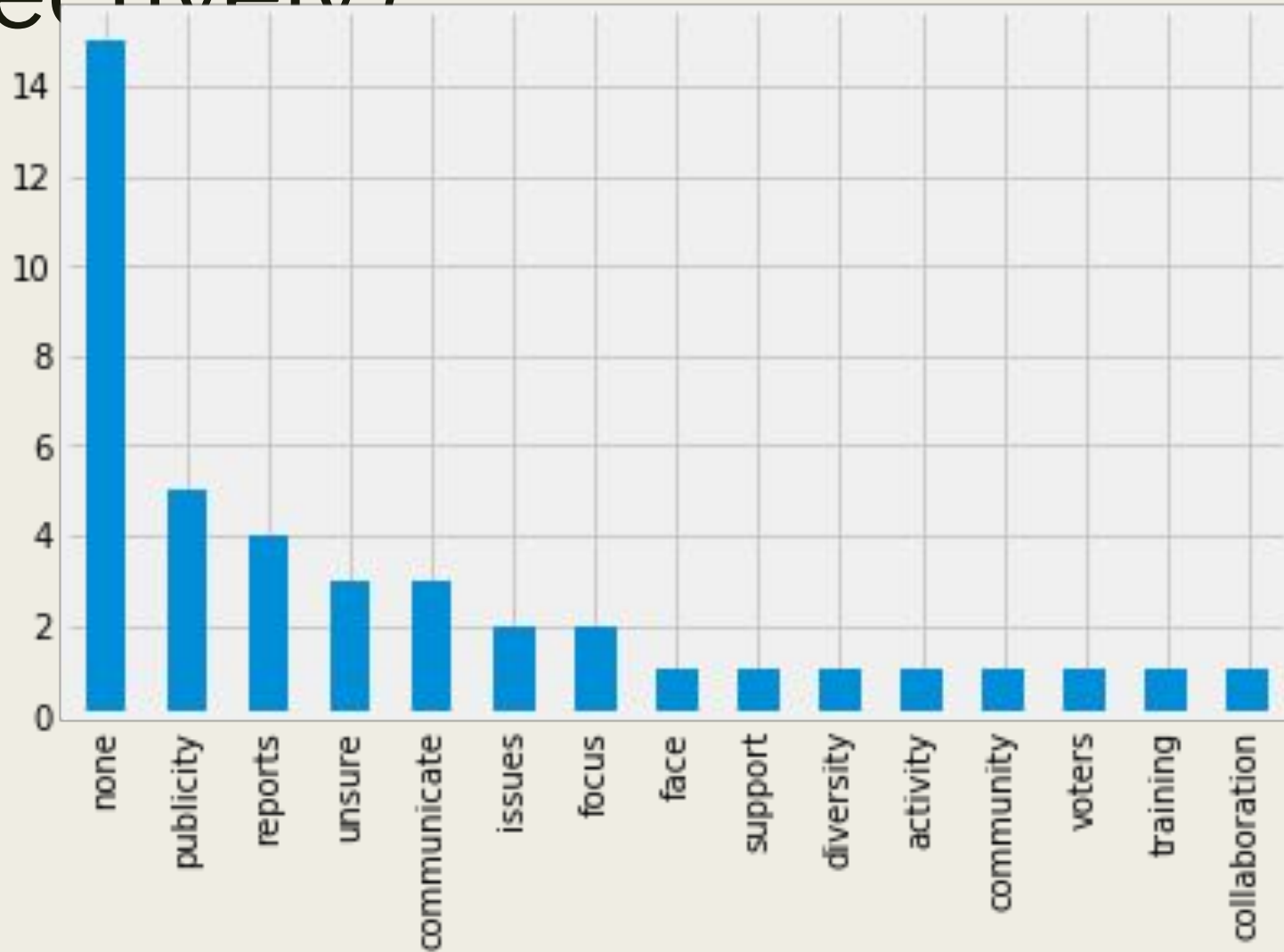
What is one thing that Network Delaware is doing well?

- Engaging activists
- Bringing people together and giving them a voice
- Focused, not scattershot approach
- making a name for the organization in the community
- Creative events. Overall communication.
- Organizing support for our next US Senator
- Getting more people involved in our government

What is one thing that Network Delaware is doing well?

- Working state wide and engaging change makers on a variety of policy issues
- Activating people all over the state
- Listening to the community and touching as many social issues as possible to create a positive impact.
- Keeping most of its core volunteering s engaged and connected. But that is a small number of total membership.
- Deepening progressive bench strength.
- Again, engaging and empowering youth.

What is one thing that Network Delaware could do more effectively?



What is one thing that Network Delaware could do more effectively?

• community involvement

- Easier access to short issue papers and statements
- put actual dollars towards issues. It is the hardest part.
- have more of a focus-seems like there are too many scattered issues being worked on at the same time
- communicate activities and outcomes
- Get the message out, adv/ social media

What is one thing that Network Delaware could do more effectively?

• Publish articles in local smaller newspapers

- Encourage more young people to vote
- Host multiple sessions for training
- You already may be doing this; but perhaps providing emotional/ spiritual support for volunteers on the front lines to address burn out and strengthen self confidence. e.g. Meditation, Small Group Discussion, etc.
- Database of donors should be clear so it can make those who have given feel appreciated and not be asked over and over for money as though they've never given.

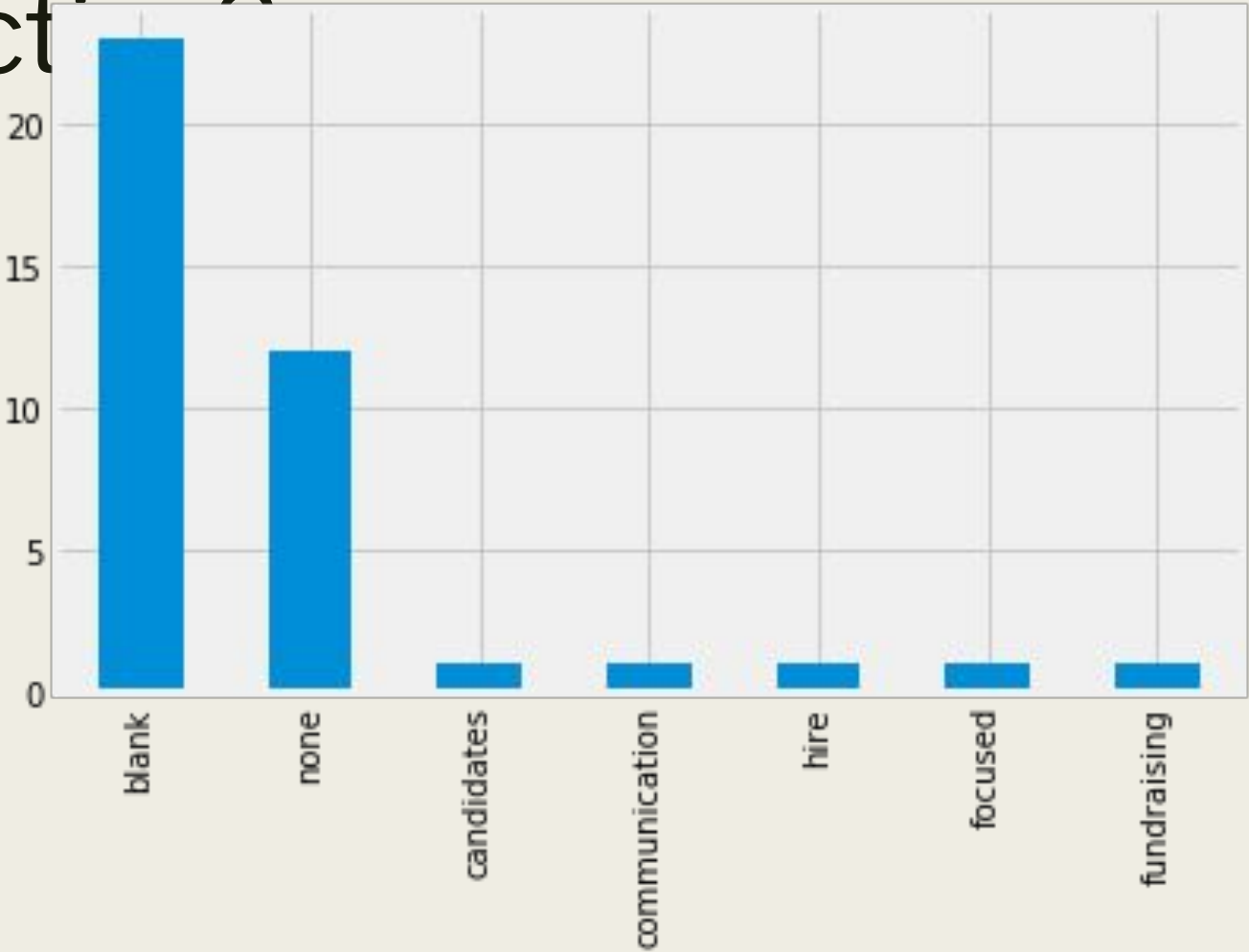
What is one thing that Network Delaware could do more effectively?

- Expand methods of external reporting.

- more social media
- Provide more 'bite sized' calls to action... things that we can do that will make a difference.
- engage a more diverse set of members
- Work more collaboratively with agencies/groups already working on the issues. Be more visible to the community.

Where was ND at the vigil for the victims of Charlottesville in Rockford Park? Where was ND at the conference for The Coalition to Dismantle the new Jim Crow? I'm disappointed at the lack of collaboration.

Is there anything else you would like to add that could make us more effective?



Is there anything else you would like to add that could make us more effective?

- Audere est facere

- Target / recruit a fundraiser

- Not sure, but I am guessing that the few people who actually work for ND are being stretched in too many directions. I believe it's better to have a more focused agenda (i.e. limited objectives) and do them well rather than tackle all the issues and do it poorly. Just an opinion.

PS- I can't see all that I wrote under the last question "make us more effective" hope that it is visible to you guys - I wanted to make sure I am heard on this issue.

PS) Could you clarify the difference between a member and a donor? Not sure what I am? Thanks K